

# 7922WM Series Licence Plate Lamps

**Now ADR Approved for Licence Plate Lamp Use**

**ADR Approved**

**IP67 Rated**

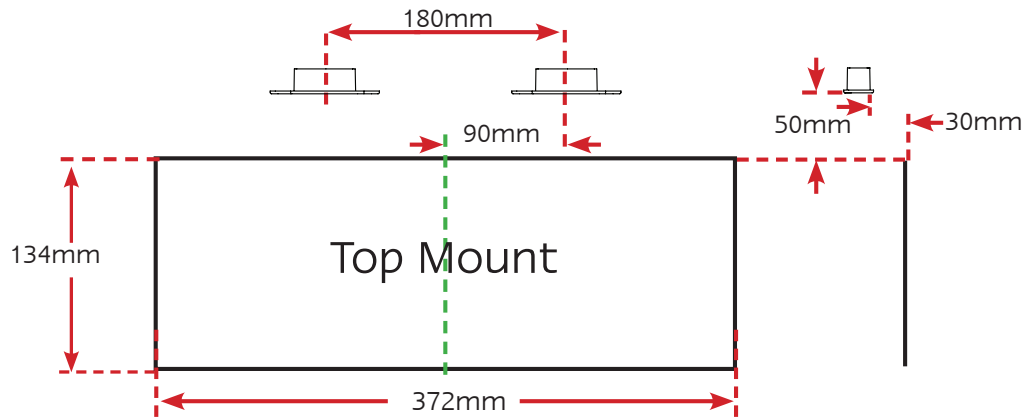
**5 Year Warranty**

- Perfect for vertical recess mounting where draws are installed
- Low Profile - Only 3mm
- ADR Australian Road Approved
- IP67 Rated Protection
- Voltage Range 12-24 Volt
- 5 Year Warranty

**Function** Licence Plate Lamps  
**Size** 79mm x 22mm x 3mm  
**Voltage** 12-24 Volt  
**Cable** 20cm  
**Lens** Polycarbonate

**Draw** **White**  
**@13.8V** 0.03A~0.05A  
**@28V** 0.03A~0.05A

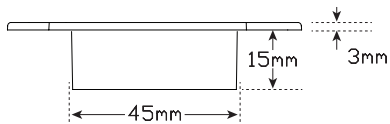
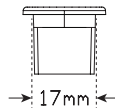
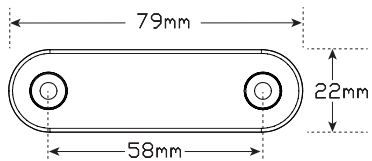
**Approvals** **Function** **CTA**  
**ADR** Licence Plate Lamp 48/00 061877



## Fitting Instructions

Recess mount two lamps facing down, 30mm from the surface and 50mm above the top edge of the licence plate lamp. Two lamps are required for ADR compliance. Refer to the mounting instruction diagram above. Please refer to ADR 13/00 for mounting instructions. Cut out size 45mm x 17mm.

Please refer to ADR 13/00 for mounting instructions.



**All enquiries P: 1800 815 000 E: [esgapcustomerservice@esg.global](mailto:esgapcustomerservice@esg.global), [www.ledautolamps.com](http://www.ledautolamps.com)**

All efforts are made to ensure all information is correct and up to date, it can be subject to change without notice. All measurements are in millimeters (mm) and are not to scale.

All LED Autolamps designs are registered throughout the world. - Current as of 12/06/2025

