

460 Series Singles

- Individually Mountable with Bracket
- ECE Australian Road Approved
- Inbuilt Reflex Reflector
- IP67 Rated
- Voltage Range 12-24 Volt
- 5 Year Warranty

ECE
Approved
100%
Waterproof
5 Year
Warranty

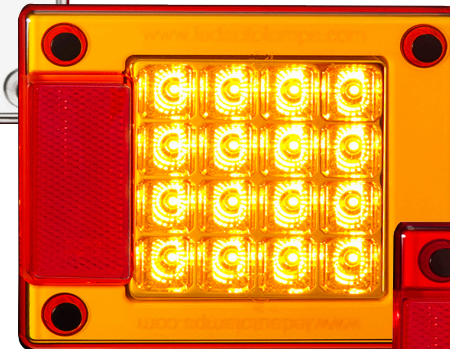
Function	(Stop/Tail)/Indicator/Reverse/Reflector
Size	148mm x 122mm x 30mm
Voltage	Multivolt 12-24V
LED Qty	16
Cable	10cm cable
Lens	PMMA
Bracket	ABS

Draw	Stop	Tail	Ind	Rev
@13.8V	0.30A	0.02A	0.32A	0.19A
@28V	0.17A	0.04A	0.18A	0.12A

Approvals	Function	CRN
ECE	Stop/Tail	R1-S1-E9-02.11293
ECE	Indicator	2A-E9-01.6205
ECE	Reverse	AR-E9-00.1208
ECE	Reflector	1A-E9-02.1472
CTA	Stop/Tail/Ref	CTA-060089
CTA	Indicator/Ref	CTA-060089
CTA	Reverse/Ref	CTA-060089



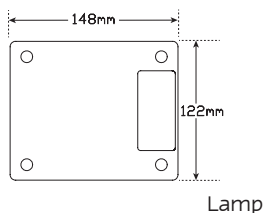
Reverse Lamp
460WM - Includes Bracket, Blister
460WMB - Lamp Only, Bulk



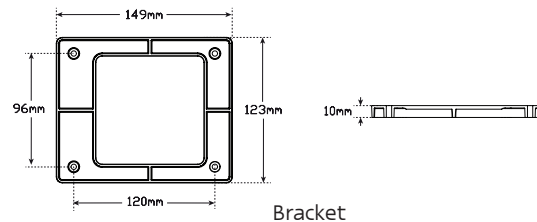
Rear Indicator Lamp
460AM - Includes Bracket, Blister
460AMB - Lamp Only, Bulk



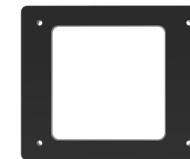
Stop/Tail Lamp
460RM - Includes Bracket, Blister
460RMB - Lamp Only, Bulk



Lamp



Bracket



Part No. 460B1B

Fitting Instructions

Surface mount onto flat surface horizontally with bracket and run cable through hole in mounting surface. Please refer to ADR 13/00.
Can also be used as a replacement lamp for the 460 series lamps



All enquiries P: (03) 9466 7075 E: led@ledtech.com.au, www.ledautolamps.com

All efforts are made to ensure all information is correct and up to date, it can be subject to change without notice. All measurements are in millimeters (mm) and are not to scale.

© All LED Technologies designs are registered throughout the world. - Current as of 22/09/2020