

# 285 Series Single Function

- ECE Australian Road Approved
- Low Profile Slimline Design
- Horizontal & Vertical Mount\*
- Black/Chrome End Caps
- Voltage Range 12 Volt
- IP67 Rated
- 5 Year Warranty

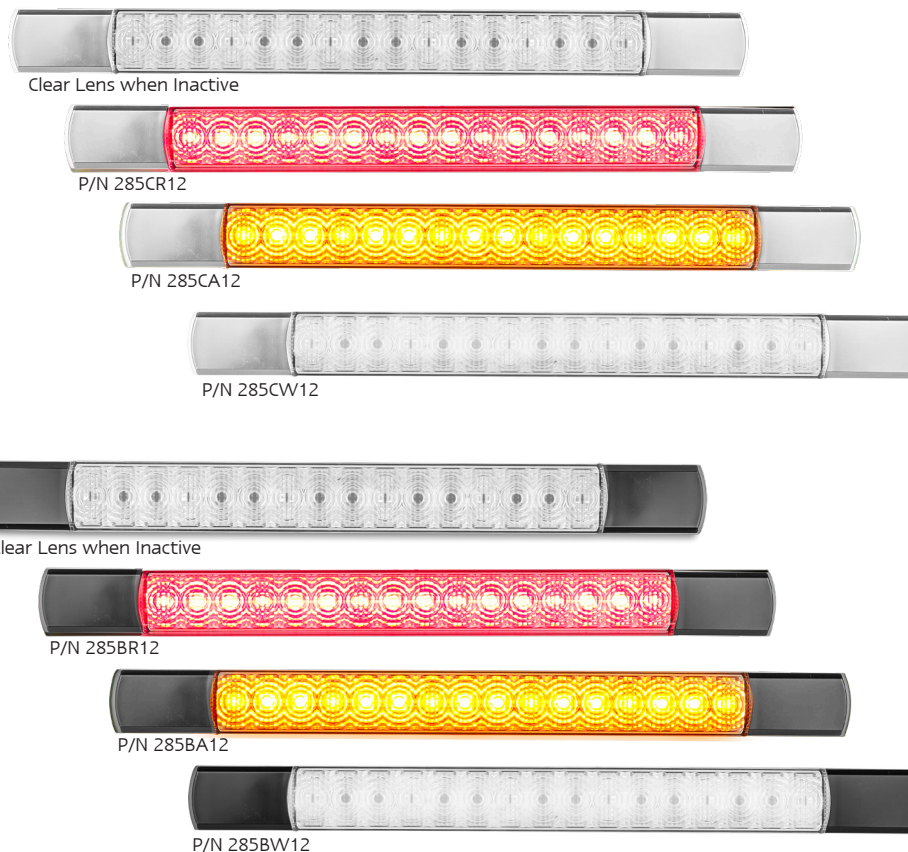
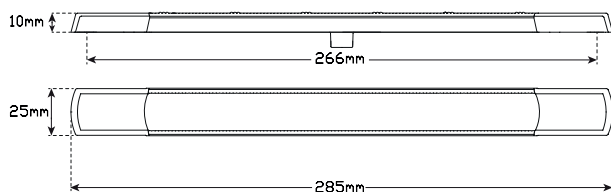
**Function** (Stop/Tail) (Indicator)(Reverse)  
**Size** 285mm x 25mm x 10mm  
**Voltage** 12 Volt  
**LED Qty** (Amber/Red 16), (White 24)  
**Cable** 85mm cable

**Draw @13.8V**

Stop	Tail	Ind	Rev
0.24A	0.09A	0.20A	0.18A

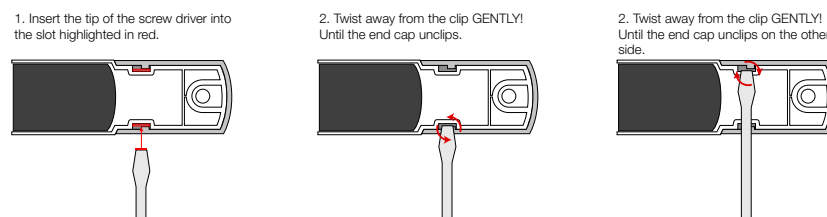
Approvals	Function	Approval No.
ECE	Stop/Tail	E9*7R02/27*22285*00
ECE	Indicator	E9*6R01/28*22184*00
ECE	Reverse	E9*23R00/22*22112*00
CTA	Stop/Tail 49/00	CTA-060111
CTA	Indicator 6/00	CTA-060112
CTA	Reverse 1/00	CTA-060123

\*Approved for Horizontal & Vertical Mount except Reverse Function



## Fitting Instructions

Surface mount. Remove end caps by following the instructions below, fix to flat surface with screws supplied then refit end caps. Please refer to ADR 13/00 for mounting instructions.



ECE  
Approved

100%  
Water Proof

5 Year  
Warranty



All enquiries P: (03) 9466 7075 E: led@ledtech.com.au, www.ledautolamps.com

All efforts are made to ensure all information is correct and up to date, it can be subject to change without notice. All measurements are in millimeters (mm) and are not to scale.

© All LED Technologies designs are registered throughout the world. - Current as of 22/09/2020