

283 Series Rear Combination Lamps

ADR
Approved

IP67
Rated

5 Year
Warranty

- Screw or Bolt Mounting with Removeable Bracket
- Horizontal Mounting
- Dual Voltage 12 Volt - 24 Volt
- ECE/ADR Australian Road Approved
- IP67 Rated
- 5 Year Warranty



Inactive

Stop/Tail/Reverse/Reflector
283ARRM - Blister, 12 Volt - 24 Volt
283ARR12B - Bulk, 12 Volt



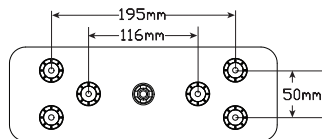
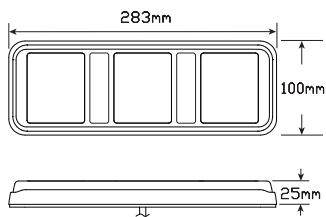
Inactive

Stop/Tail/Indicator/Reverse/Reflector
283ARWM - Blister, 12 Volt - 24 Volt

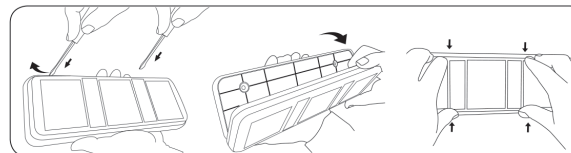
Function	Stop/Tail/Indicator/Reverse
Size	283mm x 100mm x 25mm
Voltage	Dual Voltage 12 Volt - 24 Volt
LED Qty	48
Cable	30cm Sheathed
Lens	Hardened Acrylic
Base	ABS

Draw	Stop	Tail	Ind	Rev
@13.8V	0.24A	0.03A	0.27A	0.17A
@28V	0.12A	0.02A	0.14A	0.10A

Approvals	Function	Category	CTA
ADR	Stop/Tail/Ind/Ref	49/00, 6/00 2a, 47/00	CTA-060187
ADR	Stop/Tail/Ind/Rev/Ref	49/00, 6/00 2a, 1/00, 47/00	CTA-060187



Bracket Removal Instructions



Fitting Instructions:

Insert a Flat Screwdriver between the lamp and base and carefully lever the base away from the lamp until it releases. You will need to lever from both sides of the long edge. After fitting the base horizontally to the ground, using the screw or bolt option simply reposition the lamp in the base and gently push until it clicks into place. **Wire Colours:** Red-Stop, Brown-Tail, Yellow-Indicator, Black-Reverse, White-Earth. Please refer to ADR 13/00 for further mounting instructions.



All enquiries P: 1800 815 000 E: esgapcustomerservice@esg.global, www.ledautolamps.com

All efforts are made to ensure all information is correct and up to date, it can be subject to change without notice. All measurements are in millimeters (mm) and are not to scale.

All LED Autolamps designs are registered throughout the world. - Current as of 7/02/2024