

283 Series

- Screw or Bolt Mounting with Removeable Bracket
- Dual Voltage 12 Volt - 24 Volt
- ECE/ADR Australian Road Approved
- IP67 Rated
- 5 Year Warranty

Function	Stop/Tail/Indicator/Reverse
Size	283mm x 100mm x 25mm
Voltage	Dual Voltage 12 Volt - 24 Volt
LED Qty	48
Cable	30cm Sheathed
Lens	Hardened Acrylic
Base	ABS

Draw	Stop	Tail	Ind	Rev
@13.8V	0.24A	0.03A	0.27A	0.17A
@28V	0.12A	0.02A	0.14A	0.10A

Approvals	Function	Category	CRN
ADR	Stop/Tail	49/00	49520/49534
ADR	Indicator	6/00 2a	49536
ADR	Reverse	1/00	49519
ADR	Reflector	47/00	TBA



Inactive

Stop/Tail/Reverse/Reflector

283ARRM - Blister, 12 Volt - 24 Volt

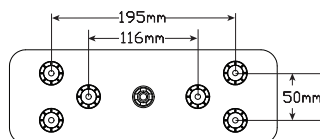
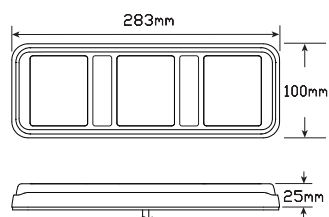
283ARR12B - Bulk, 12 Volt



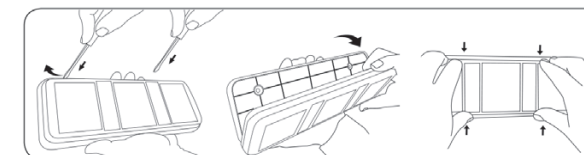
Inactive

Stop/Tail/Indicator/Reverse/Reflector

283ARWM - Blister, 12 Volt - 24 Volt



Bracket Removal Instructions



Insert a Flat Screwdriver between the lamp and base and carefully lever the base away from the lamp until it releases. You will need to lever from both sides of the long edge. After fitting the base using the screw or bolt option simply reposition the lamp in the base and gently push until it clicks into place.



All enquiries P: (03) 9466 7075 E: led@ledtech.com.au, www.ledautolamps.com

All efforts are made to ensure all information is correct and up to date, it can be subject to change without notice. All measurements are in millimeters (mm) and are not to scale.

© All LED Technologies designs are registered throughout the world. - Current as of 27/2/2018