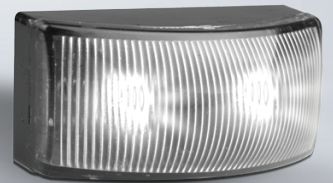




**autolamps**

**JUST ARRIVED**

**A Revolutionary new  
Marker Lamp design that  
saves on installation time**



- Drill a 10mm hole for the serrated plug.
- Pull the sheathed cable through the hole.
- Remove the protective film from the 3M tape.
- Push the serrated plug into the hole
- Line up the lamp and press firmly.
- The lamp is held securely with the plug serrations and high quality 3M tape.
- We guarantee this product for 5 Years.

**\$9.95 ea**  
List Price + gst



- Australian Road Approved
- Non Fastener Fitting Design
- Low Profile Compact Design
- IP67 Water and Dust Proof
- Voltage Range 12-24V



Part No. 5025RM2



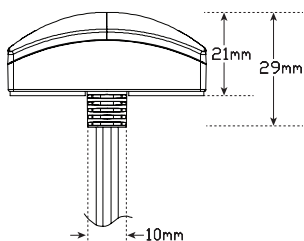
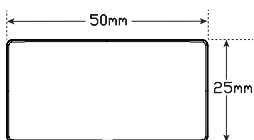
Part No. 5025AM2



Part No. 5025ARM2



Part No. 5025WM2



Specifications								
<b>Part No</b>	5025RM2	5025RMB	5025AM2	5025AMB	5025ARM2	5025ARMB	5025WM2	5025WMB
<b>List Price</b>	\$19.90	\$99.00	\$19.90	\$99.00	\$19.90	\$99.00	\$19.90	\$99.00
<b>Package</b>	Twin Blister	Box of 10	Twin Blister	Box of 10	Twin Blister	Box of 10	Twin Blister	Box of 10
<b>Function</b>	Rear End Outline Marker	Rear End Outline Marker	Side Marker Side Direction Front End Outline	Side Marker Side Direction Front End Outline	Red Amber Side Marker	Red Amber Side Marker	Front End Outline Marker	Front End Outline Marker
<b>LED Qty</b>	2	2	3	3	2	2	2	2
<b>Voltage</b>	12-24 Volt	12-24 Volt	12-24 Volt	12-24 Volt	12-24 Volt	12-24 Volt	12-24 Volt	12-24 Volt
<b>Warranty</b>	5 Years	5 Years	5 Years	5 Years	5 Years	5 Years	5 Years	5 Years
<b>Cable</b>	20cm	20cm	20cm	20cm	20cm	20cm	20cm	20cm
<b>Lens</b>	PMMA	PMMA	PMMA	PMMA	PMMA	PMMA	PMMA	PMMA
<b>Base</b>	ABS	ABS	ABS	ABS	ABS	ABS	ABS	ABS